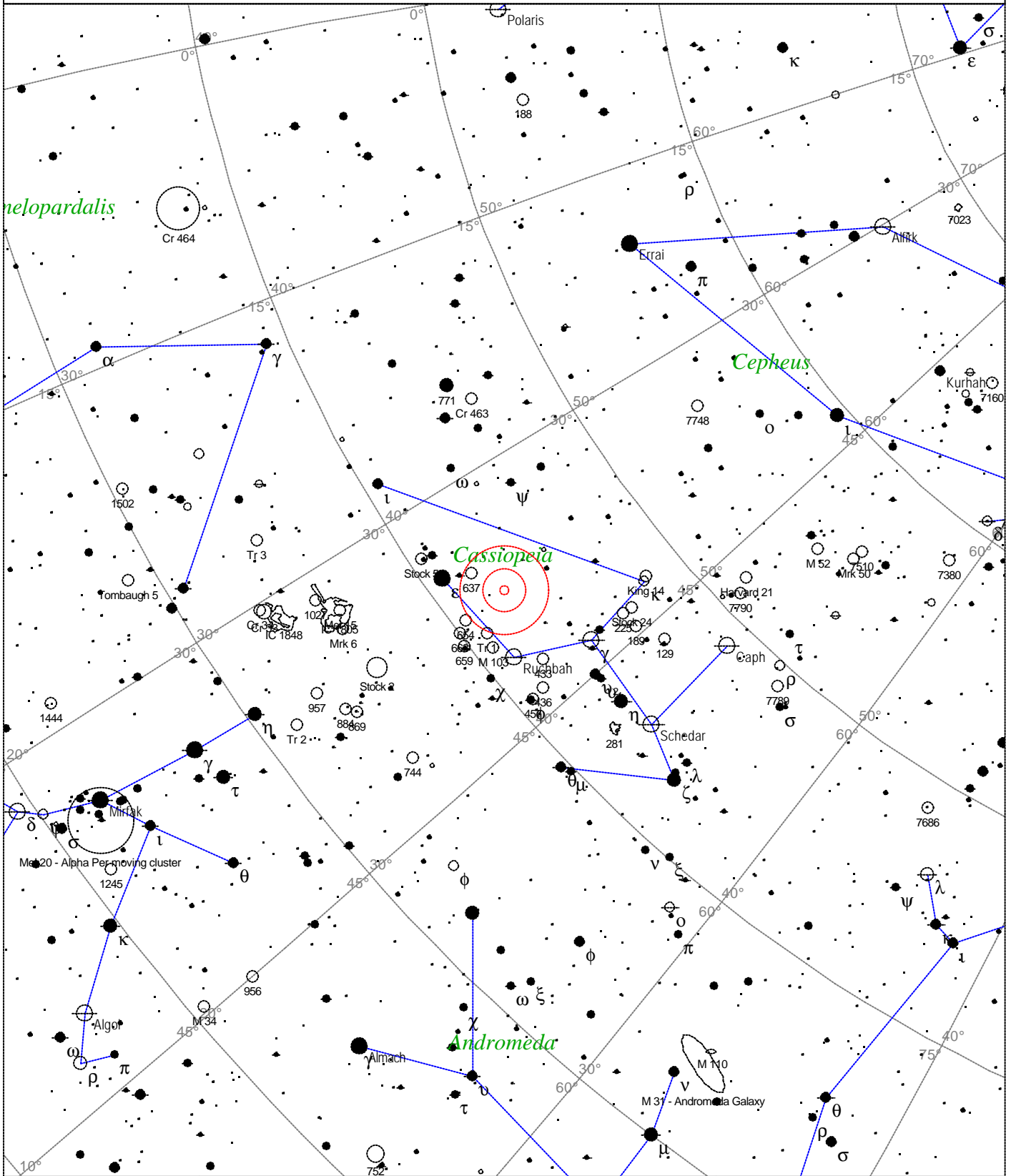


# Caldwell 8 - NGC 559



<p><b>STARS</b></p> <ul style="list-style-type: none"> <li>● &lt;3</li> <li>● 3.5</li> <li>● 4</li> <li>● 4.5</li> <li>● 5</li> <li>● 5.5</li> <li>● 6</li> <li>● 6.5</li> <li>● &gt;7</li> </ul>	<p><b>SYMBOLS</b></p> <ul style="list-style-type: none"> <li>● Multiple star</li> <li>○ Variable star</li> <li>☄ Comet</li> <li>☾ Galaxy</li> <li>□ Bright nebula</li> <li>□ Dark nebula</li> <li>⊕ Globular cluster</li> <li>○ Open cluster</li> <li>⊕ Planetary nebula</li> <li>⊗ Quasar</li> <li>△ Radio source</li> <li>× X-ray source</li> <li>○ Other object</li> </ul>	<p><i>Caldwell 8 - NGC 559</i>  <i>Type of object: Open cluster</i>  <i>Magnitude: 9.5</i>  <i>Size: 4.4'</i>  <i>Right ascension: 1h 29m 43s</i>  <i>Declination: +63° 19' 21"</i>  <i>Constellation: Cassiopeia</i></p>
---	---	---

Local Time: 19:40:11 12-Sep-2002  
 Location: 53° 27' 0" N 2° 31' 0" W

UTC: 19:40:11 12-Sep-2002  
 RA: 1h29m43s Dec: +63° 19' Field: 45.0°

Sidereal Time: 18:56:39  
 Julian Day: 2452530.3196