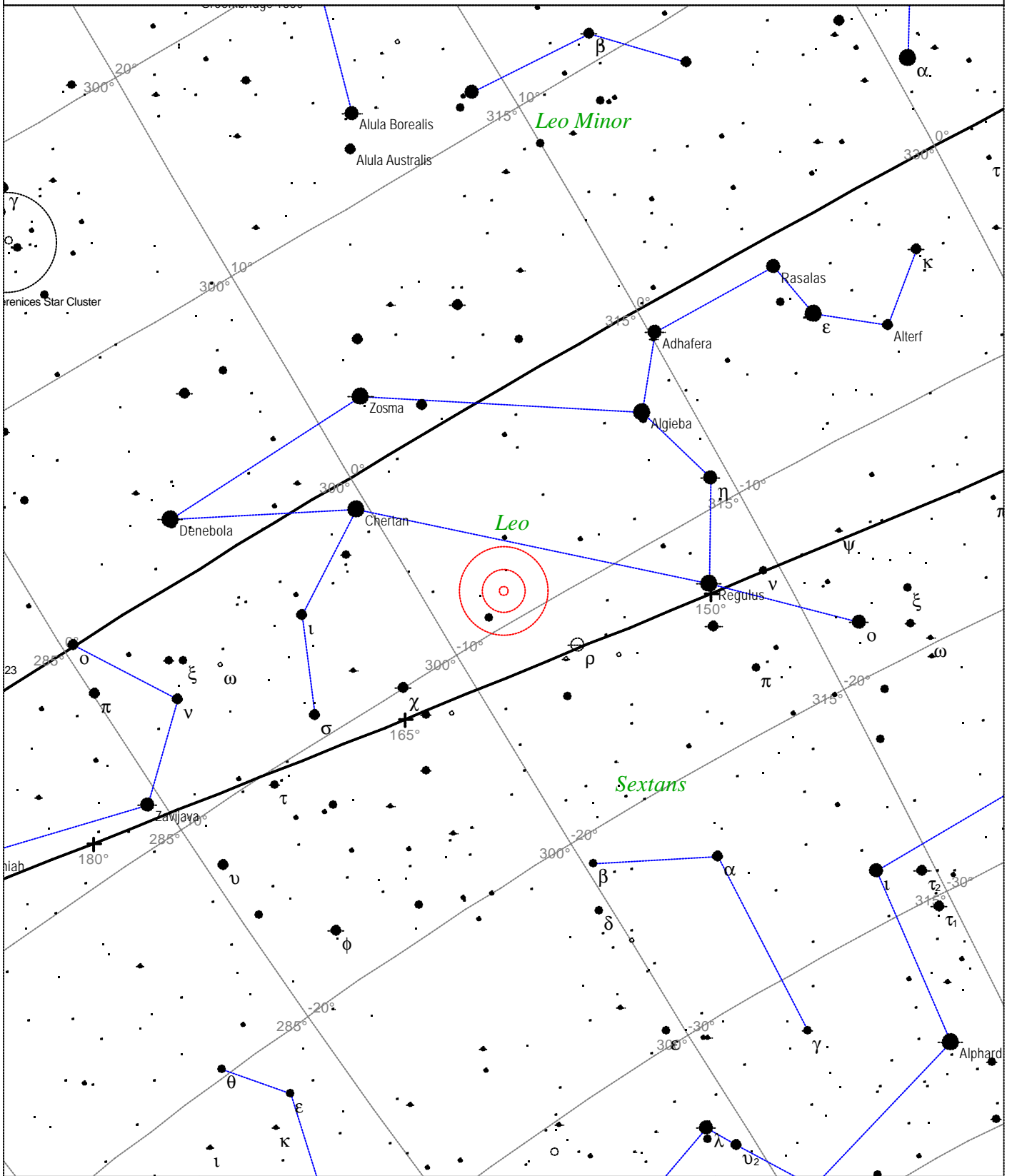


# Messier 96 - Galaxy



<p><b>STARS</b></p> <ul style="list-style-type: none"> <li>● &lt;3</li> <li>● 3.5</li> <li>● 4</li> <li>● 4.5</li> <li>● 5</li> <li>● 5.5</li> <li>● 6</li> <li>● 6.5</li> <li>● &gt;7</li> </ul>	<p><b>SYMBOLS</b></p> <ul style="list-style-type: none"> <li>● Multiple star</li> <li>○ Variable star</li> <li>☄ Comet</li> <li>☐ Galaxy</li> <li>☐ Bright nebula</li> <li>☐ Dark nebula</li> <li>⊕ Globular cluster</li> <li>○ Open cluster</li> <li>♁ Planetary nebula</li> <li>☄ Quasar</li> <li>△ Radio source</li> <li>× X-ray source</li> <li>○ Other object</li> </ul>	<p><i>Messier 96 - Galaxy</i>          Magnitude: 10.1          Surface brightness: 12.4 mag/sq arcmin          Size: 7.8'x5.2'          Position angle: 5°          Right ascension: 10h 46m 52s          Declination: +11° 48' 33"          Constellation: Leo</p>
---	---	--

Local Time: 19:40:11 12-Sep-2002  
 Location: 53° 27' 0" N 2° 31' 0" W

UTC: 19:40:11 12-Sep-2002  
 RA: 10h46m52s Dec: +11° 48' Field: 45.0°

Sidereal Time: 18:56:39  
 Julian Day: 2452530.3196